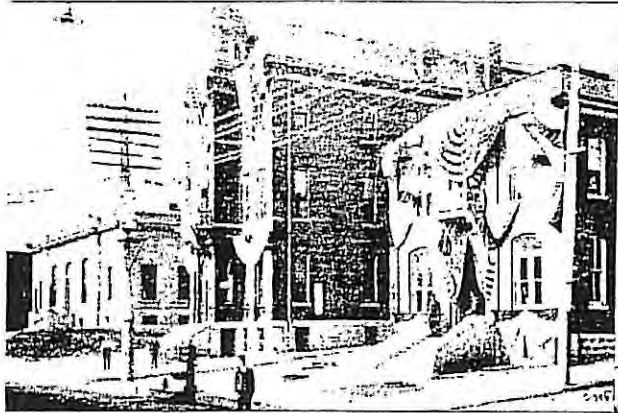


**Architectural Design Guidelines  
for the  
HISTORIC  
DOWNTOWN DISTRICT**

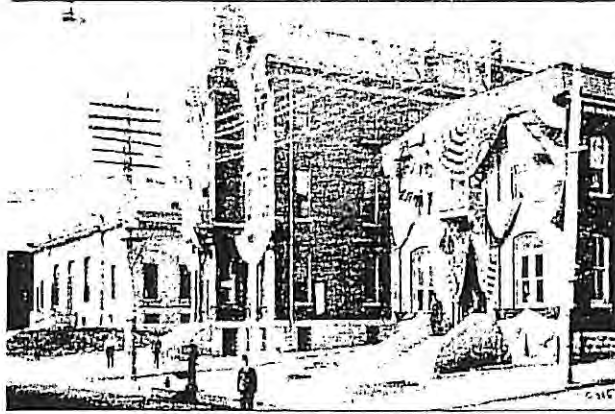


**Historic Landmarks Preservation  
& Architectural Review Board**

**City of St. Charles, Missouri**

**April 2000**

**Architectural Design Guidelines  
for the**



**Historic  
Downtown District**

Prepared by:  
Winter & Company  
775 Poplar Avenue  
Boulder, CO 80304  
(303) 440-8445

April 2000

---

# Credits

## Historic Landmarks Preservation and Architectural Review Board:

Steven Martin, Chair	Sue Kurtz
Arthur L. Castile, Council Liaison	Claire Lockett
Penny Pitman	Bill Goellner
John Hanneke	Darren Stross

## Special Business District Advisory Board:

John Dengler, Chair

## Department of City Development, City of St. Charles, Missouri:

Dan Lang, Director	Robert Myers, AICP, Planner
Genie Hatch, Planning Coordinator	Charles W. Lovelace, III, GIS Technician

## St. Charles County Historical Society:

Carolyn Roth, Archivist

## St. Charles City Council:

Rory Riddler, Ward 1	William Conrey, Ward 2
Herman Elmore, Ward 3	Mary West, Ward 4
Donald Lang, Ward 5	Richard D. Baum, Ward 6
Michael L. Klinghammer, Ward 7	Rose Kasper, Ward 8
Arthur L. Castile, Ward 9	Tom Dempsey, Ward 10

## Special Thanks to:

Mary Stiritz, Preservation Consultant  
Michael Maurer, Historic Downtown District  
Maurice Thro  
Charlotte Worthington

## Winter & Company:

Noré V. Winter  
Brian W. Koenig, AICP  
Betsy Shears

---

# Table of Contents

## SECTION I

<b>Chapter 1: Introduction</b>	<b>3</b>
<b>Chapter 2: Historic Overview of the Historic Downtown District</b>	<b>11</b>
The Concept of Significance	14
The Concept of Integrity	14
The Period of Significance	14
Choosing a Preservation Approach	14
Planning a Preservation Project	15
The Secretary of the Interior's Standards for the Rehabilitation of Historic Buildings	15
Appropriateness of Use	16
<b>Chapter 3: Architectural Styles of the Historic Downtown District</b>	<b>17</b>
Federal-Influenced Vernacular	18
Second Empire	19
Victorian Era Commercial Buildings	20
Beaux Arts	21
Classical Revival	22
Folk Victorian	22
Italianate (residential)	23
Romanesque Revival	23

## SECTION II

<b>Chapter 4: Guidelines For Historic Properties</b>	<b>27</b>
Design of Alterations	27
Site Planning and Site Features	28
Roofs	28
Architectural Details: Preservation and Treatment	29
Architectural Details: Replacement or Substitution	30
Materials	31
Street Facades	33
Doors & Entries	36
Windows	37
Balconies and Galleries	39
Porches	41
Project Phasing	41

<b>Chapter 5: Guidelines for Additions</b>	<b>43</b>
Locating an Addition	44
Form, Mass and Scale of an Addition	45
Materials	45
Architectural Details	46
<b>Chapter 6: Guidelines for New Construction and Alterations to Non-Historic Structures</b>	<b>47</b>
Site Planning	48
Building Form, Mass and Scale	48
Roofs	49
Architectural Details	50
Materials	51
Street Facades	51
Doors and Entries	52
Windows	52
<b>Chapter 7: Guidelines for All Projects</b>	<b>53</b>
Design in the Public Right-of-Way	54
Color	54
Alleys	56
Site and Building Lighting	56
Mechanical Equipment and Service Utilities	57
Awnings and Canopies	58
Parking Facilities	59
<b>Chapter 8: Guidelines for Signs</b>	<b>61</b>
Sign Context	62
Permitted Types of Signs	63
Inappropriate Sign Types	65
Sign Materials	65
Sign Content	66
Sign Lighting	66
<b>Glossary</b>	<b>67</b>